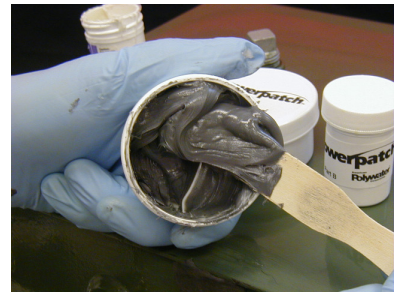


powerpatch[®]

Type EPSC

Slow Cure Sealant Paste

1. Clean surface with rag to remove dirt and grime.
2. Abrade the area to be sealed with a steel brush or sandpaper to remove loose particles and to roughen the surface. Clean and abrade all surfaces with 80 grit sanding cloth or wire brush approximately 2 to 3 inches beyond the leak. *This process will increase adhesion.*
3. **Caution:** Wear nitrile gloves (provided) and safety glasses. Refer to MSDS of all products before handling.
4. Wipe surfaces with **cleaning wipe** to thoroughly clean the surface of contaminants, oils, and to displace any remaining water or moisture.
5. Open one Part A Sealant cup (black paste) and one Part B Sealant cup (white paste).
6. Empty all the contents of the Part B Sealant Cup into the larger Part A Sealant Cup. If a thin layer of skin has formed on the surface, remove and discard this skin before mixing. Use approximately two parts resin (black) to one part curing agent (white).
7. Mix for about 1 to 2 minutes until the mixture is a uniform color of grey and no streaking is visible. See photo at right.
8. Apply the adhesive/sealant to the prepared surfaces. Spread the sealant to the prepared area leave ½ inch beyond the leak on all sides. For sealing, build a layer ¼ inch thick over the repair area.
9. Smooth Slow Cure PowerPatch[®] Sealant edges with a wet finger.
10. Application of the Slow Cure PowerPatch[®] Sealant has a working time of approximately 1 hour and a functional cure in approximately 24 hours, depending on ambient temperature.



Mix 2-part paste sealant to a uniform grey color

Application Tips

- Allow product to fully cure before immersing in water.
- Do not move area of repair until functional cure is achieved.
- In cool weather, warm product for ease of mixing and to accelerate cure time.

Curing rate of PowerPatch[®] EPSC is dependent on ambient temperature

Temperature	Working Time	Functional Cure
52° F 11° C	2 hours	48 Hours
70° F 21° C	1 hour	24 Hours
88° F 31° C	½ hour	18 Hours

powerpatch[®]

Slow Cure Sealant Type EPSC

Kit Contains:

- | | |
|-----------------------------------|----------------------------------|
| 1 Cup Part A | 2 Disposable Nitrile Gloves |
| Slow Cure PowerPatch [®] | 4 Wooden Stir Sticks |
| Resin | 1 Sandpaper Strip 1"X12" 80-grit |
| 1 Cup Part B | 3 Cleaning Wipes |
| Slow Cure PowerPatch [®] | |
| Curing Agent | |

Before using this product, the end user should conduct whatever evaluations are necessary to determine that the product is suitable for the intended end use. American Polywater expressly disclaims the warranties and conditions of merchantability and fitness for a particular purpose. American Polywater's only obligation shall be to replace such quantities of this product proven to be defective. Except for the replacement remedy, American Polywater shall not be liable for any loss, injury or direct, indirect or consequential damages resulting from product use, regardless of the legal theory asserted.

APC R.M # : 87371-001 08/15

American
Polywater[®]
Corporation

11222 60th Street North
Stillwater, Minnesota 55082 U.S.A.
1-800-328-9384 (USA & Canada only)
Telephone: 1-651-430-2270
FAX: 1-651-430-3634
www.polywater.com
support@polywater.com