



Universal Seal-Off Control Valve

The Universal Seal-Off Control Valve Body is used with the Innerduct Seal-Off, Conduit Seal-Off, and Double Seal-Off. Use the interchangeable heads for the style and size you need. Comes equipped with an air flow valve and a universal hose coupling for attachment to most compressors. $\frac{3}{16}$ " (5 mm) rope adapter included.

Part Number	Description
08032165	Seal-Off control valve body

FYI

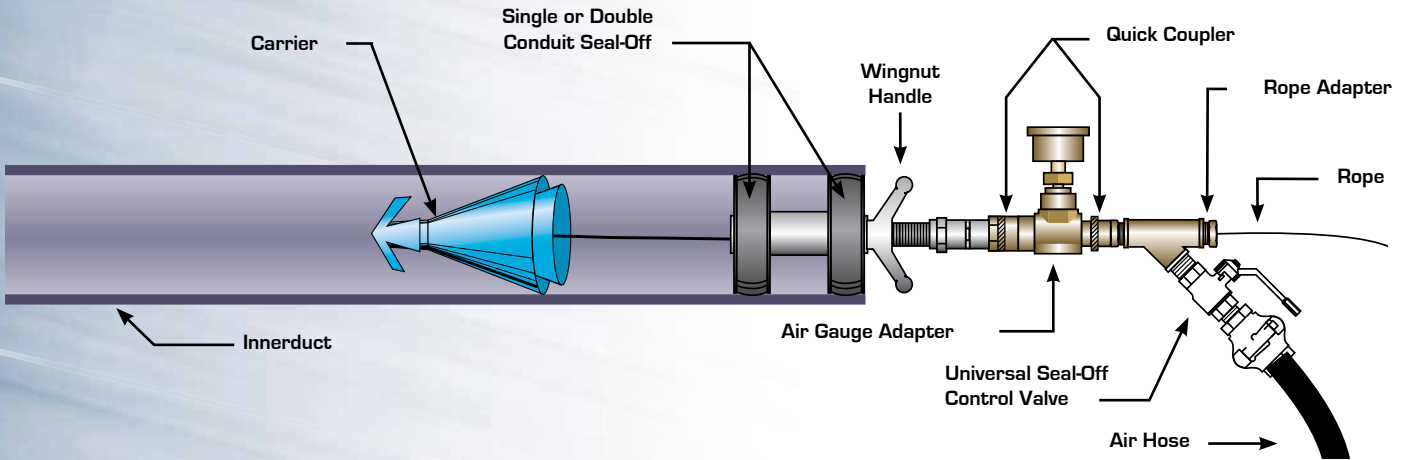
15 psi Max Pressure.



Air Gauge Adapter

The Air Gauge Adapter is used for monitoring air pressure on the Innerduct Seal-off, Conduit Seal-off, and Double Seal-off. (do not exceed 15 PSI)

Part Number	Description
08032175	Air Gauge Adapter



Individual Innerduct Seal-Offs

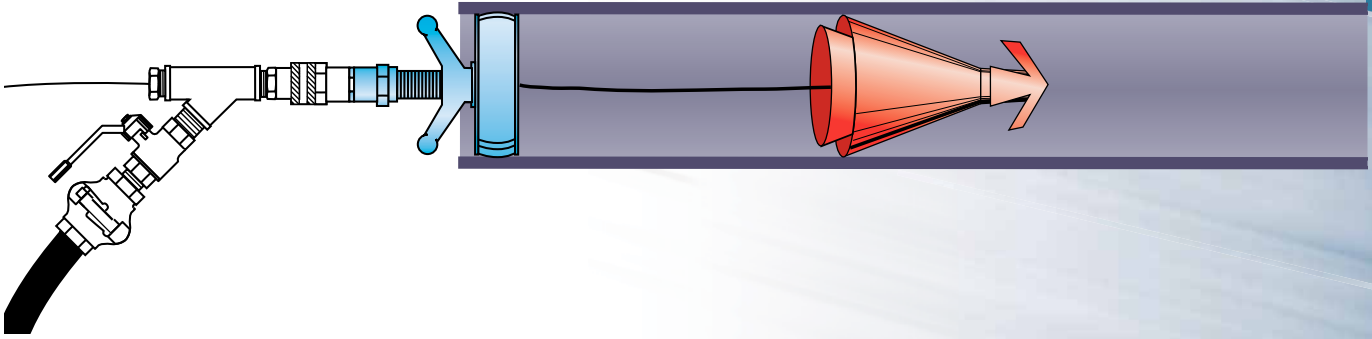
Part Number	Description	Nominal Duct Size		Innerduct I.D. Range	
		(in)	(mm)	(in)	(mm)
08034321	$\frac{3}{4}$ " Quick Innerduct Seal-Off	$\frac{3}{4}$	19	.72-.94	19-24
08034315	1" Quick Innerduct Seal-Off	1	25	.93-1.19	24-30
08034316	1 $\frac{1}{4}$ " Quick Innerduct Seal-Off	1 $\frac{1}{4}$	32	1.18-1.44	30-37
08034317	1 $\frac{1}{2}$ " Quick Innerduct Seal-Off	1 $\frac{1}{2}$	38	1.31-1.69	33-43
08034318	2" Quick Innerduct Seal-Off	2	51	1.93-2.31	49-59

Compressor Seal-Offs

Universal duct seal-off for blowing projectiles and line carriers (see pgs. 36-37) through the duct using an external air compressor. **Order Seal-Off Body, Control Valve and Seal-Off Heads separately.**

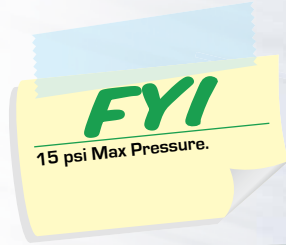


FISHING & RODDING



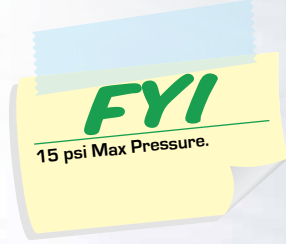
Individual Conduit Seal-Offs

Part Number	Description	Nominal Duct Size		Duct I.D. Range	
		(in)	(mm)	(in)	(mm)
08032900	2" Quick Conduit Seal-Off	2	51	1.93-2.36	49-60
08032905	2½" Quick Conduit Seal-Off	2½	63	2.40-2.76	61-70
08032910	3" Quick Conduit Seal-Off	3	76	2.87-3.31	73-84
08032915	3½" Quick Conduit Seal-Off	3½	89	3.50-3.75	89-95
08032920	4" Quick Conduit Seal-Off	4	102	3.54-4.25	90-108
08032925	5" Quick Conduit Seal-Off	5	127	4.72-5.37	120-136
08032930	6" Quick Conduit Seal-Off	6	152	5.50-6.29	140-160
08032935	8" Quick Conduit Seal-Off	8	203	7.83-8.27	199-210



Individual Double Seal-Offs

Part Number	Description	Nominal Duct Size		Duct I.D. Range	
		(in)	(mm)	(in)	(mm)
08032940	2" Quick Double Seal-Off	2	51	1.93-2.36	49-60
08032945	2½" Quick Double Seal-Off	2½	63	2.40-2.76	61-70
08032950	3" Quick Double Seal-Off	3	76	2.87-3.31	73-84
08032955	3½" Quick Double Seal-Off	3½	89	3.50-3.75	89-95
08032960	4" Quick Double Seal-Off	4	102	3.54-4.25	90-108
08032965	5" Quick Double Seal-Off	5	127	4.72-5.37	120-136
08032970	6" Quick Double Seal-Off	6	152	5.50-6.29	140-160
08032975	8" Quick Double Seal-Off	8	203	7.83-8.27	199-210





Rope Adapter Kit

Allows a wider range of rope diameters to be used with the Innerduct and Compressor seal-offs. Adapters specific for $\frac{3}{16}$ " (5 mm), $\frac{1}{4}$ " (6 mm), $\frac{3}{8}$ " (10 mm) diameter ropes provide optimum seal-off performance.

Part Number	Description
08032181	Adapter Kit for Conduit Seal-Offs
08032190	$\frac{3}{16}$ " (5 mm) Rope Adapter
08032191	$\frac{1}{4}$ " (6 mm) Rope Adapter
08032170	$\frac{3}{8}$ " (10 mm) Rope Adapter



Replacement Seals for Compressor Seal-Offs

Part Number	Nominal Duct Size	
	(in)	(mm)
08082121	2	51
08082126	2½	63
08082131	3	76
08082136	3½	89
08082141	4	102
08082151	5	127
08082161	6	152



Order individual innerduct seal-offs on page 31.

Innerduct Seal-Off Case

Inserts into the innerduct and twists tight for seal. Comes standard with Universal control valve, $\frac{3}{16}$ " (5 mm) Rope Adapter, and case. Seal-offs sold separately.

Part No.	Description
08032984	Universal Control Valve & Case (Innerduct)



Replacement Handle for Single & Double Seal-offs

Use to replace missing or damaged handles for Individual Conduit Seal-offs or Individual Double Seal-offs.

Part No.	Description
08032179	Replacement Handle for Single and Double Seal-offs

Conduit Seal-Off Case

Locks into duct with a turn of the wing-nut handle, compressing rubber ring for a better seal. Comes standard with Universal control valve, $\frac{3}{16}$ " (5 mm) Rope Adapter, and case. Seal-offs sold separately.

Part No.	Description
08032980	Universal Control Valve & Case (Single Conduit)



Order individual conduit seal-offs on page 31.

Double Seal-Off Case

Locks into duct with a turn of the wing-nut handle, compressing both rubber rings for a better seal. Comes standard with Universal control valve, $\frac{3}{16}$ " (5 mm) Rope Adapter, and case. Seal-offs sold separately.

Part No.	Description
08032983	Universal Control Valve & Case (Double Conduit)



Order individual double seal-offs on page 31.