

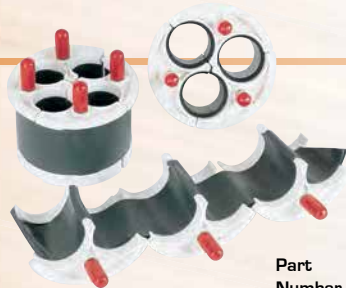


U.S. Patent No. 4,842,364.

Fiber Optic Innerduct Plug

Split plug with bushing assembly for sealing around cable in duct installations. Simple installation around in-place cables, seal all types of innerduct, ideal for manholes, buildings and cabinets. U.S. Patent No. 4,842,364.

Part Number	Size		Conduit I.D. Range		Cable O.D. Range	
	(in)	(mm)	(in)	(mm)	(in)	(mm)
08043910	1	25	1.00-1.14	25-29	.35-.57	9-14
08043911	1	25	1.00-1.06	25-27	.50-.70	13-18
08043912	1¼	32	1.22-1.36	31-35	.35-.57	9-14
08043913	1¼	32	1.22-1.36	31-35	.57-.70	13-18
08043914	1¼	32	1.24-1.34	31-34	.70-.90	18-23
08043915	1½	38	1.50-1.65	38-42	.35-.57	9-14
08043916	1½	38	1.50-1.65	38-42	.50-.70	13-18
08043920	2	51	1.98-2.20	50-56	.35-.57	9-14
08043921	2	51	1.98-2.20	50-56	.50-.70	13-18



Innerduct Organizer Plug

Removable and reusable duct seal holds innerduct securely and prevents migration. Easy installation requires no foam or chemicals.

Part Number	Size		Conduit I.D. Range		Maximum number of Innerduct	Innerduct Size		Innerduct O.D. Range	
	(in)	(mm)	(in)	(mm)		(in)	(mm)	(in)	(mm)
08093436	4	102	3.97-4.13	101-105	4	1	25	1.19-1.36	30-35
08093442	4	102	3.97-4.09	101-104	3	1 & 1½	25 & 29	1.30-1.42	33-36
08093467	4	102	3.97-4.09	101-104	3	1½ & 1¼	29 & 32	1.53-1.67	39-42



Non-Metallic Eye Nut Plug

Made of durable, expansive polyurethane with rugged polypropylene compression plates and eye nut. No tools required for installation. Completely water and air tight. Max air pressure 15 psi.

Part Number	Size		Conduit I.D. Range	
	(in)	(mm)	(in)	(mm)
08067825	2½	64	2.34-2.91	59-74
08067830	3	76	2.99-3.46	76-88
08067840	4	102	3.94-4.33	100-110
08067850	5	127	5.00-5.35	124-136
08067860	6	152	5.82-6.37	148-162



Universal Plug

For temporarily plugging duct, bell-ends and terminators. These polyethylene plugs come in sizes to fit all types of manufactured duct, even when the duct is bell-ended or a coupling is attached. The Universal Plug's extended lip design permits easy extraction.

Part Number	Size		Conduit I.D. Range	
	(in)	(mm)	(in)	(mm)
08047400	2	51	1.20-2.60	30-66
08047500	3	76	2.75-3.65	70-93
08047601	4	102	3.70-4.70	94-119
08047700	5	127	4.80-5.75	122-146
08047800	6	152	5.82-6.80	148-173

Taper of Universal Plugs



Comfit Plug

Part No.	Nominal OD (mm/inches)	Range (mm/inches)		Units per box
		mm	inches	
08047110	33.4mm/1"	26-31mm	1.024-1.220"	120
08047112	42.2mm/1½"	31-39mm	1.201-1.535"	90
08047115	48.3mm/1½"	38-49mm	1.496-1.929"	60
08047120	60.3mm/2"	47-62mm	1.850-2.441"	35