

Break-Away Swivels for Directional Drilling

Avoid overstressing cable or conduit being pulled in during directional drilling operations. The Condux Break-Away Swivels for directional drilling are designed exclusively to provide **both** the swivel and the break link for product pull-back. Eliminate the use of two or more components and shorten the gap between the reamer and pulling eye. No need to use "weak link" pipe sections or wire when using the Condux Break-Away Swivel.

Six different diameter swivels are available to accommodate various pulling needs. Break loads range from 1,200 lbs. (5,338 N) to 25,000 lbs. (111,250 N) and are designed to separate at $\pm 10\%$ of their rated break load. Order Replacement Pins as needed.

NOTE: D.Drill Swivels come with a 90 day limited warranty.

***WARNING:** These swivels to be used while Directional Drilling only— Severe personal injury could result if used with rope or steel winch lines in cable pulling applications.

1 1/4" Swivel (32 mm)

Part Number	Break Load	
	(lbs)	(N)
08021500*	1,200	5,338
08019400*	1,900	8,451
08019500*	2,000	8,896
08019600*	2,500	11,120
08019700*	3,000	13,344
08076100*	3,400	15,123
08019800*	4,000	17,792

1 3/8" Swivel (35 mm)

Part Number	Break Load	
	(lbs)	(N)
08019900*	4,500	20,016
08021300*	5,000	22,240
08022100*	5,500	24,464
08024200*	6,000	26,688
08024400*	6,500	28,912

1 5/8" Swivel (41 mm)

Part Number	Break Load	
	(lbs)	(N)
08024500*	7,000	31,136
08025500*	7,500	33,360
08027900*	8,000	35,584
08028400*	8,500	37,808

2" Swivel (51 mm)

Part Number	Break Load	
	(lbs)	(N)
08029200*	9,000	40,032
08029400*	10,000	44,480

2 1/2" Swivel (64 mm)

Part Number	Break Load	
	(lbs)	(N)
08029600*	12,000	53,376
08029700*	14,000	62,272

3" Swivel (76 mm)

Part Number	Break Load	
	(lbs)	(N)
08075600*	18,500	82,288
08075800*	22,000	97,856
08075820*	25,000	111,250



Break-Away D.Drill® Swivel
1 1/4" - 1 3/8"

U.S. Patent No. 4,687,365.

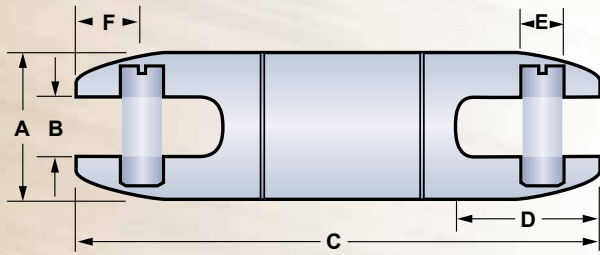
SWIVELS &
ACCESSORIES



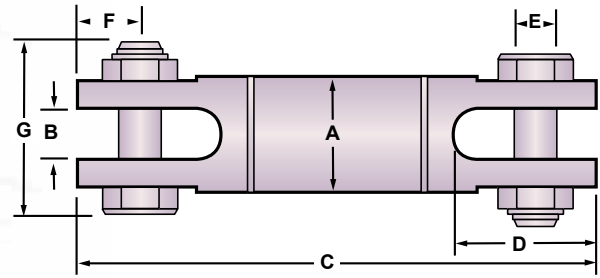
Break-Away D.Drill® Swivel
1 5/8" - 3"

U.S. Patent No. 4,687,365.

U.S. Patent No. 5,607,248.



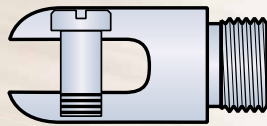
Use these dimensions when ordering the 1¼" [32 mm] and the 1⅝" [35 mm] swivels.



Use these dimensions when ordering the 1⅞" [41 mm], the 2" [51 mm], the 2½" [64 mm] and the 3" [76 mm] swivels.

	A		B		C		D		E		F		G	
	(in)	(mm)	(in)	(mm)	(in)	(mm)	(in)	(mm)	(in)	(mm)	(in)	(mm)	(in)	(mm)
1¼	.32	8.13	.56	14.17	5.44	138.14	1.34	34.03	.37	9.39	.59	14.96	-	-
1⅝	.35	8.89	.56	14.17	5.25	133.02	1.31	33.27	.44	11.18	.56	14.17	-	-
1⅞	.41	10.41	.63	16.01	6.85	174.13	1.59	40.23	.56	14.17	.78	19.81	2.36	60.01
2	.51	12.95	.75	19.05	7.83	199.07	1.81	46.03	.63	16.01	.75	19.05	2.89	73.31
2½	.64	16.26	1.00	25.40	10.93	277.61	2.84	72.14	.88	22.38	1.25	31.75	3.67	93.31
3	.76	19.30	1.31	33.27	12.75	324.06	3.56	90.43	1.13	28.71	1.37	34.78	4.50	114.30

SWIVELS & ACCESSORIES



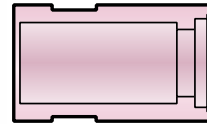
Externally Threaded Head



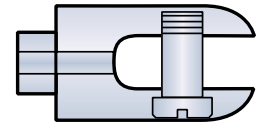
Break Pin



Bearings



Body



Internally Threaded Head

Replacement Pins For Break-Away Directional Drilling Swivels

Part Number	Break Load (lbs)	Break Load (N)	Break Pin Color Code
08021505	1,200	5,338	Brown/White
08019405	1,900	8,451	Violet/Black
08019505	2,000	8,896	Slate/White
08019605	2,500	11,120	Violet/Green
08019705	3,000	13,344	Slate/Red
08076105	3,400	15,123	Blue/Yellow
08019805	4,000	17,792	Red/Yellow
08019905	4,500	20,016	Slate/Yellow
08021305	5,000	22,240	Orange/Blue
08022105	5,500	24,464	Brown/Green
08024205	6,000	26,688	Blue/Brown
08024405	6,500	28,912	Red/Blue
08024505	7,000	31,136	Orange
08025505	7,500	33,360	Blue
08027905	8,000	35,584	Yellow
08028405	8,500	37,808	Slate
08029205	9,000	40,032	Red
08029405	10,000	44,480	Green
08029605	12,000	53,376	White
08029705	14,000	62,272	Brown
08029720	18,500	82,288	Black
08075805	22,000	97,856	Yellow
08075825	25,000	111,250	Blue
08075945	40,000	178,000	Orange

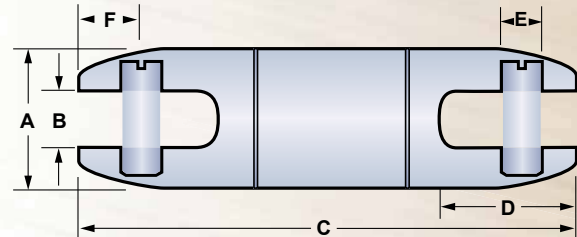
7/8" Break-Away Swivel for Directional Drilling

Avoid overstressing cable or conduit being pulled in during directional drilling operations. The Condux 7/8" Break-Away Swivel for directional drilling is designed exclusively to provide **both** the swivel and the break link for product pull-back. Eliminate the use of two or more components and shorten the gap between the reamer and pulling eye. No need to use "weak link" pipe sections or wire when using the 7/8" Condux Break-Away Swivel.

This swivel is available to accommodate various pulling needs. Break loads range from 150 lbs. (667 N) to 1,800 lbs. (8,006 N) and are designed to separate at $\pm 10\%$ of their rated break load. Order Replacement Pins as needed.

NOTE: D.Drill Swivels come with a 90 day limited warranty.

***WARNING:** This swivel is to be used while Directional Drilling only—Severe personal injury could result if used with rope or steel winch lines in cable pulling applications.



SWIVELS & ACCESSORIES

7/8" Break-Away Swivel Dimensions

A		B		C		D		E		F	
(in)	(mm)	(in)	(mm)	(in)	(mm)	(in)	(mm)	(in)	(mm)	(in)	(mm)
7/8	22	.38	9	4.83	122	1.03	26	.31	8	.53	13

7/8" Swivel (22 mm)		
Part Number	Break Load	
	(lbs)	(N)
08021015	150	667
08021020	200	890
08021025	250	1,112
08021030	300	1,334
08021035	350	1,557
08021040	400	1,779
08021045	450	2,002
08021050	500	2,224
08021055	550	2,446
08021060	600	2,669
08021065	650	2,891
08021070	700	3,114
08021075	750	3,336
08021080	800	3,559
08021085	850	3,781
08021090	900	4,003
08021100	1,000	4,448
08021110	1,100	4,893
08021120	1,200	5,338
08021130	1,300	5,782
08021140	1,400	6,227
08021150	1,500	6,672
08021160	1,600	7,117
08021170	1,700	7,562
08021180	1,800	8,006

Replacement Pins for 7/8" swivel (22 mm) Swivel			
Part Number	Break Load		Color
	(lbs)	(N)	
08018105	150	667	Slate/Violet
08018305	200	890	Green/Orange
08018005	250	1,112	Blue/White
08017605	300	1,334	Brown/Red
08018405	350	1,557	Black/Green
08075305	400	1,779	Blue/Black
08015805	450	2,002	Blue/Yellow
08076505	500	2,224	Orange/Red
08018505	550	2,446	Blue/Green
08015005	600	2,669	Orange/Black
08018605	650	2,891	Slate/Green
08076005	700	3,114	Orange/White
08075505	750	3,336	Orange/Violet
08018705	800	3,559	Red/Yellow
08018805	850	3,781	Black/Yellow
08076605	900	4,003	Orange/Yellow
08015705	1,000	4,448	Green/White
08018905	1,100	4,893	White/Yellow
08015205	1,200	5,338	Brown/White
08019105	1,300	5,782	Brown/Yellow
08074605	1,400	6,227	Green/Red
08076905	1,500	6,672	Green/Yellow
08019205	1,600	7,117	Black/White
08019305	1,700	7,562	Red/White
08017705	1,800	8,006	Brown/Black