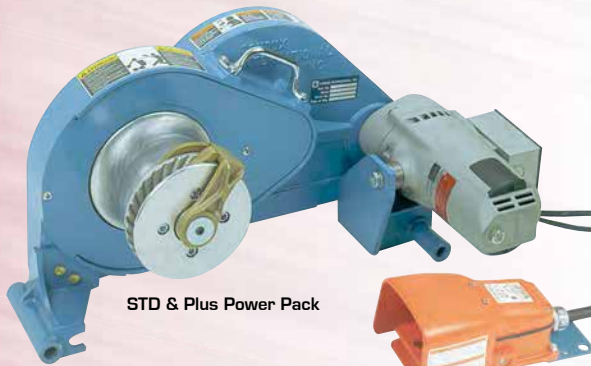




# CABLEGLIDER® POWER PACKS & ACCESSORIES



STD & Plus Power Pack



HD Power Pack

## Power Packs

As an added measure of versatility and convenience, the Condux CableGlider® Power Packs can be purchased separately without the standard base frames provided with the CableGlider Cable Pullers. The power packs provide the same pulling capacities as the CableGlider Cable Pullers (see pages 82 to 87) and can be used on the Floor Mount Frame or the Floor/Conduit/Pole Mount Frames listed on page 89.

**WARNING:** CableGlider Cable Pullers are not to be used as a hoist or for lifting, supporting or transporting people or loads.

Part Number	Description
08610860	110 Volt STD Cable Puller Power pack
08610880	110 Volt Plus Cable Puller Power pack
08674680	110 Volt HD Cable Puller Power pack

POWER CABLE  
INSTALLATION



## Adjustable Manhole Adapter

Designed to work with CableGlider Cable Pullers, the Condux Adjustable Manhole Adapter allows greater stability and versatility for manhole pulls. The rugged aluminum frame provides an adjustable platform to fit 18" (450 mm) to 46" (1,168 mm) manholes.

Use the frame to position a cable puller above a manhole. Installation is easy, the fit is secure, and the strength is a maximum 12,000 lbs. (53,376 N).

Requires 6" retaining fork (see pg. 91).

Part Number	Description
08674750	Adjustable Manhole Adapter (comes standard with 4" plate)
08674752	6" Plate
08674760	4" Replacement Plate

## Floor Mount Frame

Fastens to the floor of a vault, manhole, or utility room. The power pack pins easily to the frame. Requires 5/8" or M16 fasteners, grade 5 or better.

**WARNING:** CableGlider Cable Pullers are not to be used as a hoist or for lifting, supporting or transporting people or loads.

Part Number	Description
08610620	Floor Mount Frame (STD model)
08674595	Floor Mount Frame (Plus & HD models)



## Floor/Conduit/Pole Mount Frame

Makes it possible to attach the power pack to the floor, steel conduit, I-beams or a wood pole. Usually is used where there is limited access for overhead pulling or pulling from pole risers. Floor mounting requires 5/8" or M16 fasteners, grade 5 or better.

**NOTE:** 24" (610 mm) diameter maximum pole.

**WARNING:** CableGlider Cable Pullers are not to be used as a hoist or for lifting, supporting or transporting people or loads.

Part Number	Description
08674005	Floor/Conduit/Pole Mount Frame (STD model)
08674010	Floor/Conduit/Pole Mount Frame (Plus & HD models)



POWER CABLE  
INSTALLATION



## Extension Frame

Productivity reaches a new level with the Condux CableGlider® Cable Puller Extension Frame. Using only a few modular components, difficult pulling situations can have easy solutions.

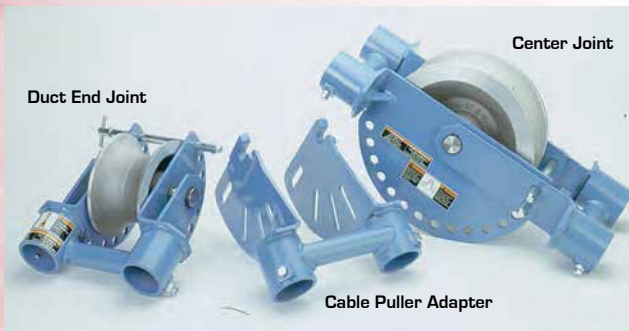
Ideal for cable pulling in deep manholes where added reach is necessary. Also, high overhead ducts can be reached without compromising the stability of the cable puller.

Pull slack with the Extension Frame when extra reach is not needed. It actually adds length to the conduit run, allowing the cable puller to be positioned further back and more cable (slack) to be pulled through.

Extension Frames are available in kits that configure to Condux CableGlider Standard, Plus, and Heavy Duty Cable Pullers. Each kit contains:

- Cable Puller Adapter
- Center Joint
- Duct End Joint

Steel duct [2" Sch 40 GRC] not included.



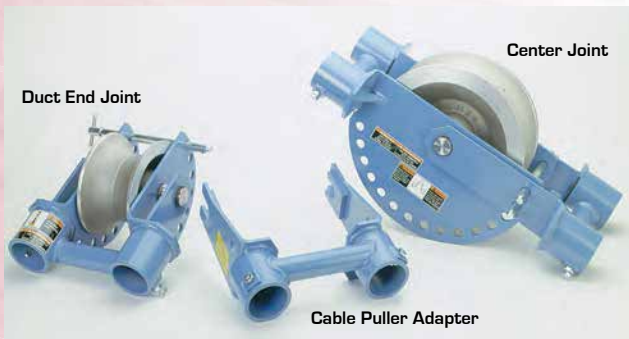
Extension Frame Kit for CableGlider STD Model

## Extension Frame Kits

Part Number	Description
08674940	Kit for CableGlider STD model
08674960	Kit for CableGlider Plus and HD models

## Replacement Parts/Individual Components

Part Number	Description
08674928	Puller Adapter for CableGlider STD model
08674927	Puller Adapter for CableGlider Plus and HD models
08674916	Center Joint for CableGlider STD, Plus and HD models
08674901	Duct End Joint for CableGlider STD, Plus and HD models



Extension Frame Kit for CableGlider Plus & HD Models



Center Joint



Cable Puller Adapter



Duct End Joint



## Conduit Adapters

Additional adapters are available which allow pulling into conduit up to 6" (152 mm) in size. The 5" (127 mm) and 6" (152 mm) adapters require the use of an optional retaining fork.

Adapters for 2" (51 mm), 3" (76 mm), 3½" (89 mm), 4" (102 mm) conduit are included in a tool box that comes standard with all cable pullers. Order additional adapters separately below, or order a complete toolbox. Includes all six items marked with [\*] below.



## Straight Adapters

Part Number	Duct Size		Part Number	Duct Size	
	(in)	(mm)		(in)	(mm)
08610642	1¼	32	08610645*	3½	89
08610623	1½	38	08610646*	4	102
08610643*	2	51	08610648	5	127
08610647	2½	64	08610649	6	152
08610644*	3	76			

## Split Adapters

Part Number	Duct Size		Part Number	Duct Size	
	(in)	(mm)		(in)	(mm)
08611001	1¼	32	08611006+	3½	89
08611002	1½	38	08611007+	4	102
08611003+	2	51	08611008	5	127
08611004	2½	64	08611009	6	152
08611005+	3	76			



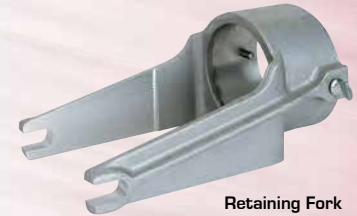
Split Adapter

## Accessories

Part #	Description
02276000*	Tool box only for accessories
08674021*	Retaining fork for 2"-4" (51-102 mm) conduit adapters
08611012+	Split adapter retaining fork for 2"-4" (51-102 mm) conduit adapters
08674022	Retaining fork for 5"-6" (127-152 mm) conduit adapters
08611013	Split adapter retaining fork for 5"-6" (127-152 mm) conduit adapters
08674017	Complete tool box. Includes all six [*] items above
08611020	Complete tool box for split adapters. Includes all five [+] items



Split Adapter Retaining Fork



Retaining Fork

## Elbow Adapter

Use in junction or meter boxes. Allows the conduit adapter to fully seat when there isn't room for the retaining fork and puller frame.

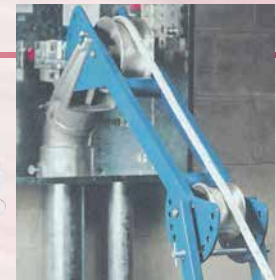
Part Number	Description
08674014	4" (102 mm) 45° Elbow adapter
08611011	4" (102 mm) 45° Split Elbow adapter



Elbow Adapter



Split Elbow Adapter



POWER CABLE  
INSTALLATION

## Extension Cords

Part Number	Description
08677325	120 Volt, 20 Amp twist 25' (7.6 m) Extension cord
08677330	120 Volt, 20 Amp twist 100' (30 m) Extension cord



Extension Cord

## Amp-Type Tensiometer

Monitors pull tension based on the number of amps the motor is drawing. Useful when superior accuracy is not required (Accuracy is ±20%). Amp usage is then translated into a tension reading shown on the display.

Part Number	Description
08674100	110 Volt Amp-Type Tensiometer (STD & Plus models)
08674501	110 Volt Amp-Type Tensiometer (HD model)

Amp-Type Tensiometer for STD & Plus Models



Amp-Type Tensiometer for HD Model