



CONDUX



PULLING EYES & ACCESSORIES

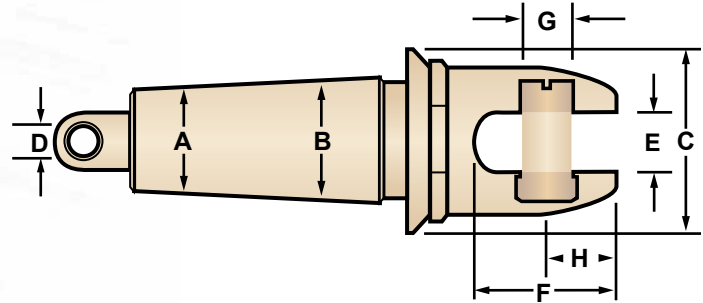
## Swivel Head Innerduct Pulling Eye

The Innerduct Pulling Eye is a hybrid tool that combines features from standard innerduct pulling eyes and Condux swivels. A swivel head prevents twisting and binding of the innerduct as it is installed. It eliminates the need for a separate swivel on each pulling eye when installing single innerducts into individual conduits or multiple innerducts into a single conduit. Its short length is an advantage on tight bends compared to using a separate swivel and pulling eye. Easily installed using a 1<sup>3</sup>/<sub>8</sub>" deep socket or adjustable wrench.

**NOTE:** To determine correct pulling eye size, obtain the actual innerduct inside diameter (I.D.). The I.D. measurement must be greater than dimension A and smaller than dimension B.

## Replacement Clevis Pins for Swivel Head Innerduct Pulling Eyes

Part Number	Replacement Part Number
08960712	08081036
08960715	08081036
08960720	08081036



**FYI**  
See Compatibility chart on page 73 to determine what Innerduct Pulling Eyes work with the different size Innerduct Ranges, Innerduct SDR Ratings, Swivels, Pulling Harnesses and Threaded Chain Connectors.

Part Number	Nominal Size		Innerduct I.D. Range		Max O.D. C		Hole Dia. D		Slot Width E		Slot Depth F		Pin Dia. G		Pin Center H	
	(in)	(mm)	A-B (in)	A-B (mm)	(in)	(mm)	(in)	(mm)	(in)	(mm)	(in)	(mm)	(in)	(mm)	(in)	(mm)
08960712*	1-1 <sup>1</sup> / <sub>4</sub>	25-32	1.06-1.43	27-37	1.75	44	.44	11	.56	14	1.31	33	.44	11	.56	14
08960715*	1 <sup>1</sup> / <sub>2</sub>	38	1.37-1.68	35-43	2.00	51	.44	11	.56	14	1.31	33	.44	11	.56	14
08960720*	2	51	1.93-2.12	49-54	2.44	62	.44	11	.56	14	1.31	33	.44	11	.56	14

\* Will fit all Condux pulling harnesses.

## Clevis Head Innerduct Pulling Eye

Same tapered threads as the standard innerduct pulling eye, these pulling eyes feature a slotted head with clevis pin to permit direct attachment to any Condux multiple pulling harness leg ends. When properly sized and installed, these eyes will not pull out of the innerduct until the pulling tensions have greatly exceeded the maximum pulling tensions recommended by the innerduct manufacturers.

**NOTE:** To determine correct pulling eye size, obtain the actual innerduct inside diameter (I.D.). The I.D. measurement must be greater than dimension A and smaller than dimension B.

## Replacement Clevis Pins for Clevis Head Innerduct Pulling Eyes

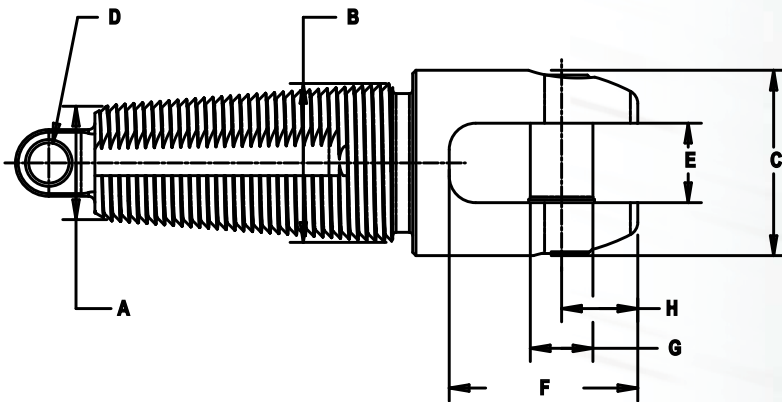
Part Number	Replacement Part Number
08914310	08081046
08914320	08081036
08914330	08210135
08914340	08081016
08914350	08081016
08914360	08081006

**FYI**

See Compatibility chart on page 73 to determine what Innerduct Pulling Eyes work with the different size Innerduct Ranges, Innerduct SDR Ratings, Swivels, Pulling Harnesses and Threaded Chain Connectors.



PULLING EYES & ACCESSORIES



Part Number	Nominal Size		Innerduct I.D. Range		Max O.D. C		Hole Dia. D		Slot Width E		Slot Depth F		Pin Dia. G		Pin Center H	
	(in)	(mm)	A-B (in)	A-B (mm)	(in)	(mm)	(in)	(mm)	(in)	(mm)	(in)	(mm)	(in)	(mm)	(in)	(mm)
08914310*	3/4	19	.71-.87	18-22	1.25	32	.25	6	.56	14	1.34	34	.38	10	.59	15
08914320*	1	25	.93-1.06	24-27	1.38	35	.25	6	.56	14	1.34	34	.44	11	.56	14
08914330*	1 1/4	32	1.06-1.43	27-37	1.75	44	.38	10	.75	19	1.78	45	.63	16	.81	21
08914340*	1 1/2	38	1.37-1.68	35-43	2.00	51	.38	10	.75	19	1.78	45	.63	16	.72	18
08914350*	1 3/4	44	1.68-1.81	43-46	2.25	57	.38	10	.75	19	1.78	45	.63	16	.72	18
08914360**	2	51	1.93-2.12	49-54	2.50	62	.38	10	.75	19	2.50	62	.88	22	1.23	31

\* Will fit all Condux pulling harnesses.

\*\* Will fit the Condux 3/8" and 1/2" cable pulling harnesses.



CONDEX



## FYI

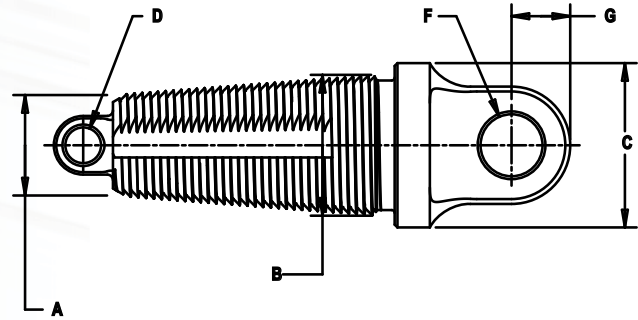
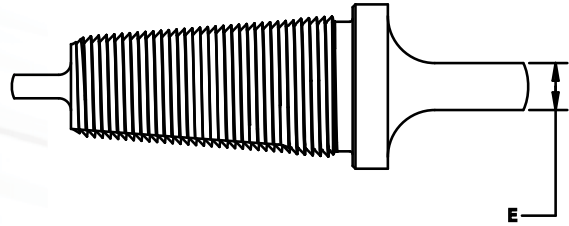
See Compatibility chart on page 73 to determine what Innerduct Pulling Eyes work with the different size Innerduct Ranges, Innerduct SDR Ratings, Swivels, Pulling Harnesses and Threaded Chain Connectors.

PULLING EYES & ACCESSORIES

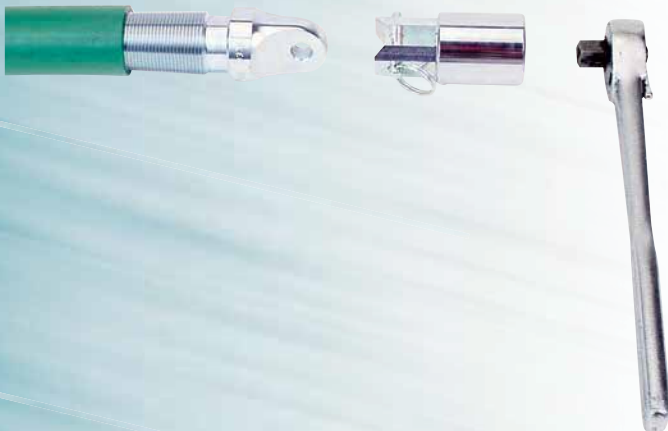
## Fixed Head Innerduct Pulling Eye

Tapered buttress threads thread into the innerduct for maximum pulling strength. These eyes connect directly to a Condux swivel (see page 46). When properly sized and installed, these eyes will not pull out of the innerduct until the pulling tensions have greatly exceeded the maximum pulling tensions recommended by the innerduct manufacturers.

**NOTE:** To determine correct pulling eye size, obtain the actual innerduct inside diameter (I.D.). The I.D. measurement must be greater than dimension A and smaller than dimension B.



Part Number	Nominal Size		Innerduct I.D. Range		Max O.D.		Hole Dia.		Tang Thickness		Tang Hole Diameter		Tang Hole Location	
	(in)	(mm)	A-B (in)	A-B (mm)	(in)	(mm)	(in)	(mm)	(in)	(mm)	(in)	(mm)	(in)	(mm)
08914110	¾	19	.71-.87	18-22	1.25	32	.25	6	.38	10	.50	13	.50	13
08914120	1	25	.93-1.06	24-27	1.38	35	.25	6	.38	10	.50	13	.50	13
08914130	1¼	32	1.06-1.43	27-37	1.75	44	.38	10	.50	13	.66	17	.63	16
08914140	1½	38	1.37-1.68	35-43	2.00	51	.38	10	.50	13	.66	17	.63	16
08914150	1¾	44	1.68-1.81	43-46	2.25	57	.38	10	.50	13	.66	17	.75	19
08914160	2	51	1.93-2.12	49-54	2.50	62	.38	10	.50	13	.81	21	.75	19



## Innerduct Pulling Eye Installation Tool

Fits on a ½" Drive Wrench to facilitate insertion of the eye into the innerduct.

Part Number	Description
08913335	Installation Tool

## Compatibility Chart

Use the chart to determine what Innerduct Pulling Eyes work with the different size Innerduct Ranges, Innerduct SDR Ratings, Swivels, Pulling Harnesses and Threaded Chain Connectors.

	Innerduct Range							Compatibility		
	Innerduct Eye Part No.	Innerduct I.D. Range	Innerduct Range					Swivel Part No.	Pulling Harness Legs	Threaded Chain Connectors
			¾" Rating	1.00" Rating	1.25" Rating	1.50" Rating	2.00" Rating			
Swivel Head	08960712	1.06-1.43	-	SDR 13.5 SDR 17 SDR 21	SDR 7 SDR 9 SDR 11 SDR 13.5	SDR 7	-	-	All	-
	08960715	1.37-1.68	-	-	SDR 13.5 SDR 15.5 SDR 17 SDR 21	SDR 9 SDR 11 SDR 13.5 SDR 15.5	-	-	All	-
	08960720	1.93-2.12	-	-	-	-	SDR 11 SDR 13.5 SDR 15.5 SDR 17	-	All	-
Clevis Head	08914310	.71-.87	SDR 11 SDR 13.5	-	-	-	-	-	All	-
	08914320	.93-1.06	-	SDR 7 SDR 9	-	-	-	-	All	-
	08914330	1.06-1.43	-	SDR 13.5 SDR 17 SDR 21	SDR 7 SDR 9 SDR 11 SDR 13.5	SDR 7	-	-	All	-
	08914340	1.37-1.68	-	-	SDR 13.5 SDR 15.5 SDR 17 SDR 21	SDR 9 SDR 11 SDR 13.5 SDR 15.5	-	-	All	-
	08914350	1.68-1.81	-	-	-	SDR 21	SDR 7	-	All	-
	08914360	1.93-2.12	-	-	-	-	SDR 11 SDR 13.5 SDR 15.5 SDR 17	-	All	-
Fixed Head	08914110	.71-.87	SDR 11 SDR 13.5	-	-	-	-	-	-	¼" - ⅜"
	08914120	.93-1.06	-	SDR 7 SDR 9	-	-	-	08080912 08080913	-	¼" - ⅜"
	08914130	1.06-1.43	-	SDR 11 SDR 13.5 SDR 17 SDR 21	SDR 7 SDR 9 SDR 11 SDR 13.5	SDR 7	-	08080912 08080913 08210014	-	¼" - ⅜"
	08914140	1.37-1.68	-	-	SDR 13.5 SDR 15.5 SDR 17 SDR 21	SDR 9 SDR 11 SDR 13.5 SDR 15.5	-	08080912 08080913 08210014	-	¼" - ⅜"
	08914150	1.68-1.81	-	-	-	SDR 21	SDR 7	08080913 08210014	-	⅜" & ⅝"
	08914160	1.93-2.12	-	-	-	-	SDR 11 SDR 13.5 SDR 15.5 SDR 17	08080912 08210014	-	¼" - ⅜"

PULLING EYES & ACCESSORIES

## CTS Gas Pipe Pulleys

Tapered buttress threads thread into the gas pipe for maximum pulling strength. These eyes connect directly to a Condux Breakaway Swivel (compatible with Condux ⅝" Breakaway Swivel only). When properly sized and installed, these eyes will not pull out of the gas pipe until the pulling tensions have greatly exceeded the maximum pulling tensions recommended by the gas pipe manufacturers.

Part Number	Description	Dimension
08914005	½ Inch CTS Gas Pipe Pulley	.315-.551
08914007	¾ Inch CTS Gas Pipe Pulley	.551-.813
08914010	1 Inch CTS Gas Pipe Pulley	.813-1.050

