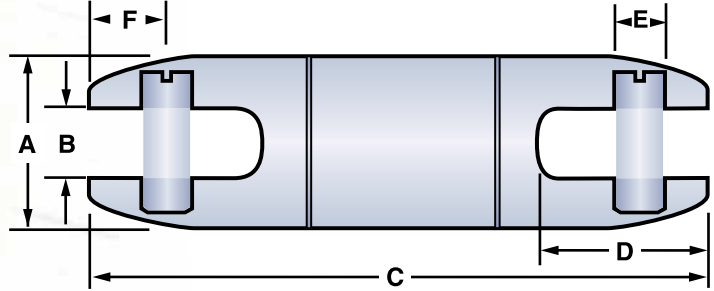




U. S. Patent No. 4,687,365.

## Break-Away Swivel

Essential for fiber optic and coaxial cable pulling, these swivels have a break load ranging from 150–1,800 pounds (667–8,006 N) and are designed to separate at  $\pm 10\%$  of their rated break load. If the load rating is exceeded, the interior break pin fractures, the swivel separates, and the cable remains undamaged. Break pin is easily replaceable (see ordering information, next page).



## Break-Away Swivel Dimensions

| A    |      | B    |      | C    |      | D    |      | E    |      | F    |      |
|------|------|------|------|------|------|------|------|------|------|------|------|
| (in) | (mm) | (in) | (mm) | (in) | (mm) | (in) | (mm) | (in) | (mm) | (in) | (mm) |
| 5/8  | 16   | .28  | 7    | 3.56 | 90   | .79  | 20   | .25  | 6    | .37  | 9    |
| 7/8  | 22   | .38  | 10   | 4.51 | 115  | 1.06 | 27   | .31  | 8    | .53  | 13   |

### 5/8" Swivel (16 mm)

| Part Number | Break Load |       |
|-------------|------------|-------|
|             | (lbs)      | (N)   |
| 08017300    | 200        | 890   |
| 08017400    | 250        | 1,112 |
| 08017800    | 300        | 1,334 |
| 08016900    | 450        | 2,002 |
| 08017200    | 600        | 2,669 |
| 08017500    | 650        | 2,891 |
| 08017900    | 750        | 3,336 |

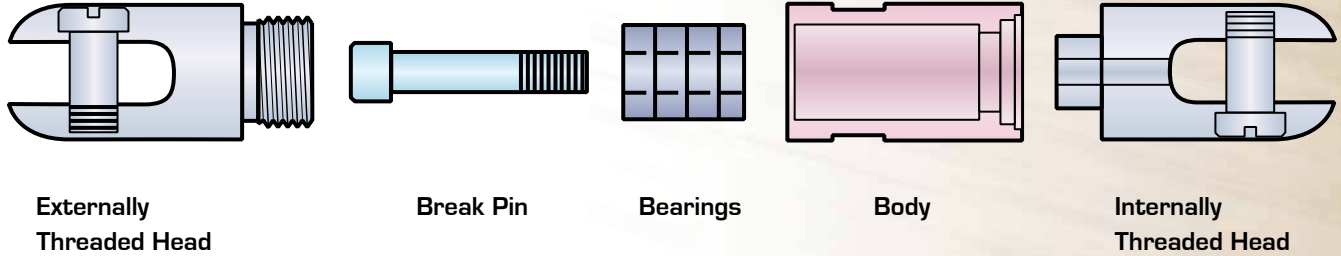
### 7/8" Swivel (22 mm)

| Part Number | Break Load |       |
|-------------|------------|-------|
|             | (lbs)      | (N)   |
| 08018100    | 150        | 667   |
| 08018300    | 200        | 890   |
| 08018000    | 250        | 1,112 |
| 08017600    | 300        | 1,334 |
| 08018400    | 350        | 1,557 |
| 08075300    | 400        | 1,779 |
| 08015800    | 450        | 2,002 |
| 08076500    | 500        | 2,224 |
| 08018500    | 550        | 2,446 |
| 08015000    | 600        | 2,669 |
| 08018600    | 650        | 2,891 |
| 08076000    | 700        | 3,114 |
| 08075500    | 750        | 3,336 |
| 08018700    | 800        | 3,558 |
| 08018800    | 850        | 3,781 |
| 08076600    | 900        | 4,003 |
| 08015700    | 1,000      | 4,448 |
| 08018900    | 1,100      | 4,893 |
| 08015200    | 1,200      | 5,338 |
| 08019100    | 1,300      | 5,782 |
| 08074600    | 1,400      | 6,227 |
| 08076900    | 1,500      | 6,672 |
| 08019200    | 1,600      | 7,117 |
| 08019300    | 1,700      | 7,562 |
| 08017700    | 1,800      | 8,006 |

**NOTE:** Swivels are not designed to run around bullwheels.

## Replacement Pins

Break pins for Condux Break-Away Swivels are easy to order and ready to ship.



## Replacement Pins for 5/8" (16 mm) Swivel

| Part Number | Break Load |       | Color         |
|-------------|------------|-------|---------------|
|             | (lbs)      | (N)   |               |
| 08017305    | 200        | 890   | Green/Black   |
| 08017405    | 250        | 1,112 | Blue/White    |
| 08017805    | 300        | 1,334 | Blue/Violet   |
| 08016905    | 450        | 2,002 | Blue/Yellow   |
| 08017205    | 600        | 2,669 | Orange/Black  |
| 08017505    | 650        | 2,891 | Brown/White   |
| 08017905    | 750        | 3,336 | Orange/Violet |

## Replacement Pins for 7/8" (22 mm) Swivel

| Part Number | Break Load |       | Color         |
|-------------|------------|-------|---------------|
|             | (lbs)      | (N)   |               |
| 08018105    | 150        | 667   | Slate/Violet  |
| 08018305    | 200        | 890   | Green/Orange  |
| 08018005    | 250        | 1,112 | Blue/White    |
| 08017605    | 300        | 1,334 | Brown/Red     |
| 08018405    | 350        | 1,557 | Black/Green   |
| 08075305    | 400        | 1,779 | Blue/Black    |
| 08015805    | 450        | 2,002 | Blue/Yellow   |
| 08076505    | 500        | 2,224 | Orange/Red    |
| 08018505    | 550        | 2,446 | Blue/Green    |
| 08015005    | 600        | 2,669 | Orange/Black  |
| 08018605    | 650        | 2,891 | Slate/Green   |
| 08076005    | 700        | 3,114 | Orange/White  |
| 08075505    | 750        | 3,336 | Orange/Violet |
| 08018705    | 800        | 3,781 | Red/Yellow    |
| 08018805    | 850        | 3,781 | Black/Yellow  |
| 08076605    | 900        | 4,003 | Orange/Yellow |
| 08015705    | 1,000      | 4,448 | Green/White   |
| 08018905    | 1,100      | 4,893 | White/Yellow  |
| 08015205    | 1,200      | 5,338 | Brown/White   |
| 08019105    | 1,300      | 5,782 | Brown/Yellow  |
| 08074605    | 1,400      | 6,227 | Green/Red     |
| 08076905    | 1,500      | 6,672 | Green/Yellow  |
| 08019205    | 1,600      | 7,117 | Black/White   |
| 08019305    | 1,700      | 7,562 | Red/White     |
| 08017705    | 1,800      | 8,006 | Brown/Black   |