

400 D.Drill® Directional Drilling Swivels

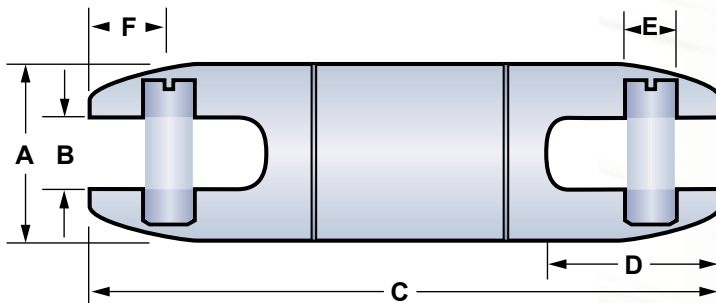
Designed specifically for directional drilling, the Condux 400 D.Drill Swivels prevent boring equipments' rotational torque from interfering with the product (cable or conduit) being pulled. The D.Drill Swivels are greasable and double sealed to keep contaminants out. There is a 90 day warranty on the directional drill swivels.

CAUTION: To be used for directional drilling and underground cable installation only.

CAUTION: Condux requires the use of a calcium based lubricant only. Other lubricants may have adverse reactions when exposed to bentonite products. Condux requires that the swivels be flushed with grease after each use to purge any contaminants that may have penetrated past the seals into the swivel while boring.



SWIVELS &
ACCESSORIES



Part Number	Working Load		Tension		Compression		A		B		C		D		E		F	
	(lbs)	(N)	(lbs)	(N)	(in)	(mm)	(in)	(mm)	(in)	(mm)	(in)	(mm)	(in)	(mm)	(in)	(mm)		
08190408	1,800	6,588	595	2,177	7/8	22	.38	9	4.83	122	1.03	26	.31	8	.53	13		
08190412	4,000	14,641	1,300	4,758	1 1/4	32	.56	14	6.57	166	1.34	34	.37	9	.59	15		
08190416	8,500	37,808	2,800	12,454	1 5/8	41	.63	16	7.22	183	1.59	40	.56	14	.78	19		
08190420	10,000	44,480	3,300	14,678	2	51	.75	19	8.29	210	1.77	45	.63	16	.71	18		
08190425	20,000	88,960	6,600	29,357	2 1/2	64	1.00	25	11.44	290	2.79	71	.88	22	1.23	31		
08190430	30,000	133,440	10,000	44,480	3	76	1.31	33	13.27	337	3.56	90	1.13	28	1.37	34		

400 D.Drill Replacement Parts

Part Number	Clevis Pin
08190408	08081065
08190412	08081042
08190416	21000381
08190420	21000391
08190425	21000401
08190430	08190539

